

At Pacific Steel & Recycling, we strive to be the best environmental stewards we can be in the communities we're a part of and we kindly ask that our customers help us with this commitment in the material they bring to us.

If you have any additional questions related to this pamphlet or the info therein, please don't hesitate to contact any one of our employee-owners as we'd be happy to assist.

QUALITY

ASSURANCE



THANK YOU
for choosing Pacific!

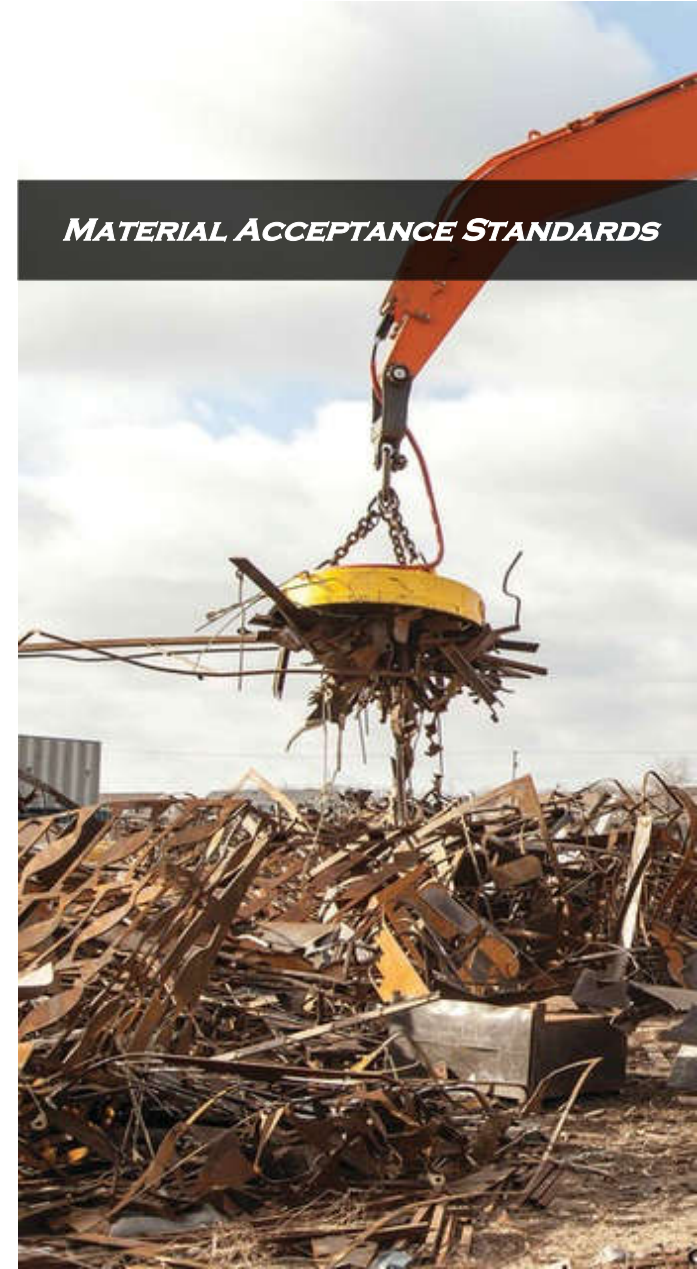


We are 100% Employee-Owned



PACIFIC
STEEL & RECYCLING™

MATERIAL ACCEPTANCE STANDARDS



Updated: 05/2025

PROHIBITED-ITEMS

- **Radioactive Materials**
(or, items with a radioactive label, ie. X-ray equipment, military/airplane gauges, smoke detectors, TENORM, etc.)



- **Explosive Materials/ Live Munitions**
(including loaded frac-pipe and all live ammunition shells)



- **Pressurized Gas Cylinders/Sealed Containers** (must be devalued or visibly vented with adequate size hole)



- **Tanks/Drums**
(w/out Empty Tank Certificates and proper venting/holes)



- **Accumulators**
(w/out Empty Tank Certificate, plugs removed, drained and remediated)



- **Flammable Liquids**
(i.e. separated oil/gasoline)



- **Items w/ Flammable Liquids** (i.e. lawnmowers, tractors, other hydraulic equipment. **Please drain fluids prior to our acceptance**)



- **Lithium-Ion Batteries**
(unless source-separated from rechargeable electronics, hybrid-autos, etc.)



PROHIBITED-ITEMS

- **Asbestos**
(i.e. friable or non-friable > than 1%)



- **Biohazards**
(i.e. medical wastes, needles, other)



- **Chemicals/Hazardous Wastes** (i.e. poisons, household cleaning supplies, etc.)



- **AC Compressors/ Fridges** (w/out CFC evacuation certification or if PS&R facility does not have capacity to properly remediate)



- **Ballasts, Transformers or Capacitors**
(w/out "Non-PCB" label or documentation showing under 50ppm)



- **Mercury** (i.e. fluorescent lights, thermometers, other)



- **Aerosol Cans**
(unless punctured and drained)

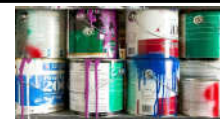


- **Oil filters**
(unless drained via "hot method")



PROHIBITED-ITEMS

- **Paint Cans**
(unless completely dry and less than 5 gallons)



- **Other Household Batteries** (AAA, AA, D, NiCd, NiMH, other. **Please remove from items prior to our acceptance**)



- **Yard Wastes/Other**
(i.e. dirt, grass, leaves, rock, wood, carpet, garbage, concrete, rubber, glass, and plastic)



The prohibited items listed above are subject to change and may not include all items related to this PS&R facility. Please inquire at your local facility for more info.

